



TECHNICAL SPECIFICATION

CHURCH HILL THEATRE

• EDINBURGH •
THE CITY OF EDINBURGH COUNCIL

At the Church Hill Theatre, we have our own production team who will work with you and suppliers to help turn your ideas into reality.

The equipment detailed in this spec is reviewed and updated as required.

We would advise contacting our team to talk through your specific requirements.

Email

CHTEnquiries@edinburgh.gov.uk

Telephone

0131 226 9907

WIFI / Internet

The venue has use of the public WIFI called 'Council Public Internet', available in all FOH areas and the Studio.

Specific internet support can be discussed with our Production Manager in more detail if required.

Auditorium Details

The traditionally styled auditorium seats 353, this can be altered to hold 2 wheelchair users and 349 seats. Seats can be removed, depending on the needs of the visiting company. The theatre boasts a large backstage area, perfect for a variety of performances. There is also a backstage shower and green room available for use.

Sound

Our inhouse sound desk is the Sound Craft Signature 22 console.

In the control booth, we have a Stageline CD-292USB Dual CD/MP3 player.

From the control booth, we have a multicore to the stage that has 16 sends from the stage rack (parallel with the box in the orchestra pit) and 6 returns to the control booth. We also have 4 CATe linking the stage and control booth.

Speakers:

FOH: 4x Bose 802 hung in pairs either side of the stage.

Delays: 2x Bose 101 on brackets at the rear of the auditorium (note, there is no delay unit)

Onstage: 2x free standing floor monitors

Please Note: We have no stock of microphones, stand, cables, jumps, leads etc.

Comms

We can offer up to 5 sets of Single Muff Tecpro headsets and belt packs for use. The Base Station is situated FOH with access panels Stage Left and Stage Right. A small amount of XLR is available to link and extend packs.

Lighting

Our inhouse lighting board is the ETC Element 40 with dual screens. We have a standard set for our lighting rigs (see appendix on last page).

Light	Stock	Replacement Bulb	Type
Catana F	12	1000w T11 or T19	Fresnel
Coda	5	500w K1 Linear Halogen	4 Way Flood Battens
Strand SL	24	600w GKV	Varying degree profile (15/30, 23/50)
Prelude F	12	500w T18 or T25	Fresnel

We have 72 ways of 10A circuits (channels 1-62, 67-72, 75-78) and 6 ways of 20A (63-66 – coda battens, 73-74).

In addition to this, there is also a Strand STM dimmer on the fly floor with 3 Socapex outputs for channels 81-98 and 2 15A sockets for 99-100.

The DMX Splitter is located on the fly floor.

Inhouse there is a supply of spare lamps available for our fixtures located within the offstage tech cupboard and Dimmer Room. There is a small assortment of spare fixtures/gels/gel frames/tape and rope available for use if required. We do not have additional power or data cable available within the venue.

Staging

As standard the stage surface will be covered with black marley (heavy duty lino) unless otherwise requested. The floor beneath is plywood painted matt black.

The stage is 8.5m deep by 8m wide and can be extended over the orchestra pit for a total area of 10.5 m deep by 8m. The orchestra pit is 8m wide by 2m deep.

The stage extension is available by prior arrangement only and may incur additional costs.

Rigging

The safe working load for LX1-4 is 150kg per bar.

Access

Please note that all equipment deliveries should be taken through the side of the building. The load-in is flat floor.

Stage Load in Doors: 1230x3500 mm

Ground Floor Load in Doors: 2500x1400mm

There is a passenger lift that can be accessed from the bar to give access to the auditorium.

Please note that the protection jackets need to be on in order to use the lift for carrying equipment.

Inner Door leading to lift: 2000 x 1100 mm

Lift Capacities: 10 person / 800kg

Car Dimensions: 2220x1340x1300 mm

Storage

We have dedicated storage space located on the ground floor, a shared space with inhouse teams.

Dressing Rooms

There are 4 dressing rooms backstage, 1 and 2 up by the stage and 3 and 4 down a level with access via a staircase.

13A sockets are in each room along with speakers for show relay and announcements from stage.

Each dressing room is equipped with lit up mirrors, clothes rail and WC.

Studio

The Studio can be hired alongside the theatre or as a separate area. This diverse space can be used for rehearsals, extra dressing room, performances, private parties and conferences.

We have a 63A 3Phase Commando Socket that can be used.

5x 13A sockets are located around the room.

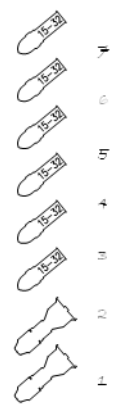
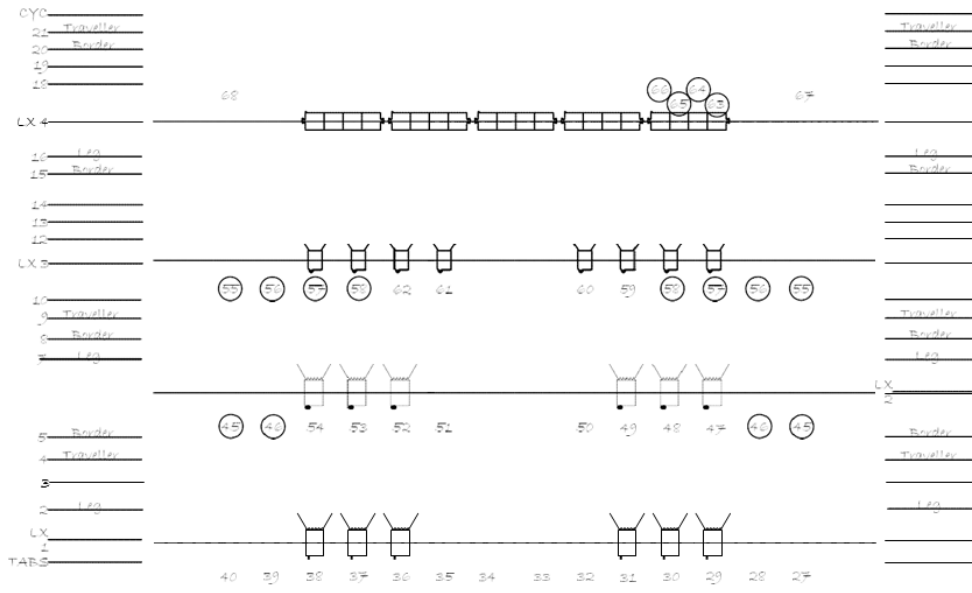
Speaker for show relay and announcements from stage this can be turned off.

It has its own access if required and its own toilets.

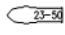
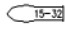




Fixings

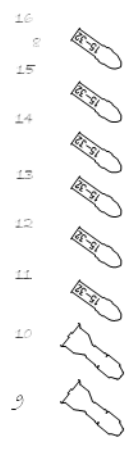
Due to the historic nature of the venue, we do not allow fixings into the fabric of the venue, this includes fixings to floor, ceilings, walls etc and encompasses all forms of temporary and permanent fixings. Our inhouse Production team can offer solutions from the use of approved professional grade Gaffer tape to NEC approved double sided tape.

Appendix 1 Lighting Plot



KEY

	SL 23/50
	SL 15/32
	SL 10°
	Prelude F
	Cantata F
	Coda 4
+	Channel
⊕	Paired Channel



Lighting Plan
Square 1 revised.

Also Available:
 8 x SL23/50
 4 x Prelude F
 4 x Coda Flood
 2 x Prelude 16/30